



Government of India
Ministry of Earth Sciences
India Meteorological Department



Press Release

Date: 24th March, 2025

Time of Issue: 1345 hours IST

**Subject: (i) Thunderstorms activity with winds (30-50 Kmph) likely to continue over many parts of peninsular India on 24th & 25th March and decrease significantly thereafter.
(ii) A fresh wet spell of rainfall is likely over Western Himalayan Region during 24th to 27th March.**

i. Realised weather during past 24 hours till 0830 hours IST of today, the 24th March 2025 (Annexure I):

- ❖ **Heavy rainfall** reported at isolated places over Coastal Andhra Pradesh.
- ❖ **Hailstorms reported** at isolated locations over Sub-Himalayan West Bengal & Sikkim, Arunachal Pradesh, Assam & Meghalaya and Telangana.
- ❖ **Squally/Gusty winds** prevailed at isolated locations over Odisha, Arunachal Pradesh and Assam & Meghalaya.
- ❖ **For more details of realised weather, kindly refer Annexure I**

Temperature:

- ❖ For temperature observations during past 24 hours till 0830 hours IST of today are provided in **Annexure II**

ii. Weather Systems, Forecast and Warnings (Annexure III & IV):

- ❖ A trough/wind discontinuity runs from south Chhattisgarh to north Kerala across interior Maharashtra, and interior Karnataka in lower tropospheric levels. A trough in middle & upper tropospheric westerlies runs roughly along Long. 87°E to the north of Lat. 22°N. Under the influence of these systems:
 - ✓ **Scattered to Fairly widespread** light/moderate rainfall accompanied with **thunderstorm, lightning & gusty winds (speed 30-50 kmph)** likely over Tamilnadu Puducherry & Karaikal, Lakshadweep, Andhra Pradesh, Telangana, south Madhya Maharashtra, Chhattisgarh, Odisha, on 24th; Karnataka on 24th & 25th; Kerala & Mahe during 24th -27th March, 2025.
- ❖ **A fresh Western Disturbance is likely to affect Western Himalayan Region from night of 24th March.** A Western Disturbance as a trough in lower to upper tropospheric level with its axis at 3.1 km above mean sea level runs roughly along Long. 49°E to the north of Lat. 25°N. Under its influence:
 - ✓ **Isolated to scattered** light/moderate rainfall accompanied with **thunderstorm, lightning** likely over Jammu-Kashmir-Ladakh-Gilgit-Baltistan-Muzaffarabad during 24th-27th; Himachal Pradesh during 25th-27th and over Uttarakhand on 26th & 27th March.
 - ✓ **Heavy rainfall/snowfall** likely at isolated places over Jammu-Kashmir-Ladakh-Gilgit-Baltistan-Muzaffarabad on 26th March.
 - ✓ **Heavy rainfall** likely at isolated places over Arunachal Pradesh on 28th March.

Temperature Forecast:

Forecast of temperature:

Maximum temperature:

- ❖ Gradual rise in maximum temperatures by 2-3°C likely over many places over plains of Northwest India during next 2 days and fall by 2-3°C thereafter (except Uttar Pradesh where rise by 4-6°C is expected during next 4 days).
- ❖ Gradual rise in maximum temperatures by 4-6°C likely over West India and Northeast India during next 4-5 days.
- ❖ Gradual rise in maximum temperatures by 2-4°C likely over Central India and Interior Maharashtra during next 4-5 days.
- ❖ No significant change in maximum temperatures likely over Gujarat during next 24 hours and fall by 2-3°C thereafter.

Heat wave and Hot & Humid weather warning:

- ❖ **Hot & humid weather conditions** very likely to prevail in isolated pockets over coastal areas of Gujarat State on 24th & 25th; over Tamilnadu Puducherry & Karaikal, Coastal Andhra Pradesh & Yanam and Rayalaseema on 27th & 28th March.

iv. Weather conditions and forecast over Delhi/NCR during 24th March to 27th March. 2025 (Annexure V)

For more details, kindly refer National Weather Bulletin:

https://mausam.imd.gov.in/responsive/all_india_forecast_bulletin.php

For District wise warnings refer: <https://mausam.imd.gov.in/responsive/districtWiseWarningGIS.php>

Significant weather reported during past 24 hours till 0830 hours IST of today:

- ❖ **Light to moderate Rainfall/Snowfall** observed at isolated places over Uttarakhand.
- ❖ **Light/moderate Rainfall** observed at a few places over Arunachal Pradesh, Kerala & Mahe, South Interior Karnataka; at isolated places over Vidarbha, Chhattisgarh, West Bengal & Sikkim, Bihar, Jharkhand, Odisha, Assam & Meghalaya, Nagaland, Manipur, Mizoram & Tripura, Coastal Andhra Pradesh & Yanam, Telangana, Rayalaseema, North Interior Karnataka and Tamilnadu Puducherry & Karaikal.
- ❖ **Thunderstorm reported** at isolated locations over Chhattisgarh, West Bengal & Sikkim, Bihar, Jharkhand, Odisha, Arunachal Pradesh, Assam & Meghalaya, Nagaland, Manipur, Mizoram & Tripura, West Bengal & Sikkim, Telangana, Tamilnadu Puducherry & Karaikal, North Interior Karnataka and Kerala & Mahe.

Rainfall recorded (in cm):

- ❖ **Coastal Andhra Pradesh & Yanam:** Palakonda (dist Parvathipuram Manyam) 7, Veeraghattam (dist Parvathipuram Manyam) 5, Parvathipuram (dist Parvathipuram Manyam) 5, Balajipeta (dist Parvathipuram Manyam) 3, Garividi (dist Vizianagaram) 3, Cheepurupalle (dist Vizianagaram) 3, Seethanagaram (dist Parvathipuram Manyam) 3,
- ❖ **Odisha:** Ganjam-5
- ❖ **Chhattisgarh:** Jashpurnagar (dist Jashpur) 5, Manora (dist Jashpur) 1, Bhairamgarh (dist Bijapur) 1, Nangur (dist Bastar) 1, Tapkara (dist Jashpur) 1
- ❖ **Tamil Nadu:** Vilupuram (dist Villupuram) 5; Rajapalayam (dist Virudhunagar), Kunderipallam (dist Erode), Thanjavur PTO (dist Thanjavur) 3 each;
- ❖ **Kerala & Mahe:** Nilambur (dist Malappuram) 5, Aralam (dist Cannur) 4, Perumpavur (dist Ernakulam) 3, Karapuzha (dist Wynad) 2, Manantoddy (dist Wynad) 2, Thritle (dist Palakkad) 2, Ulanad (dist Pathanamthitta) 2,
- ❖ **Arunachal Pradesh:** Deed AWS (dist Lower Siang) 4, Seppa Oampoli AWS (dist East Kameng) 3,
- ❖ **Assam & Meghalaya:** Barapani (dist Ri Bhoi) 3, Baithalangso (dist Karbi Anglong) 3,
- ❖ **North Interior Karnataka:** Chittapur (dist Kalaburgi) 3, Bidar Pto (dist Bidar) 1
- ❖ **South Interior Karnataka:** Bandipura (dist Chamarajanagar) 3, Kunigal (dist Tumakuru) 3, Kolar Pwd (dist Kolar) 3, H D Kote (dist Mysuru) 3, Gubbi (dist Tumakuru) 3,
- ❖ **Telangana;** Regode (dist Medak) 3.
- ❖ **Hailstorm recorded:**
- ❖ **Assam & Meghalaya:** Shillong, Barapani, Central Assam
- ❖ **Sub-Himalayan West Bengal & Sikkim:** Darzeeling
- ❖ **Telangana:** Maedak.

- ❖ Yesterday, Maximum Temperatures were **markedly above normal (5.1°C or more)** at a few places over Jammu-Kashmir-Ladakh-Gilgit-Baltistan-Muzaffarabad; **appreciably above normal (3.1°C to 5.0°C)** at many places over West Rajasthan; at a few places over Himachal Pradesh, Punjab; at isolated places over Saurashtra & Kutch; **above normal (1.6°C to 3.0°C)** at a few places over Haryana-Chandigarh-Delhi, Konkan & Goa, Coastal Karnataka; at isolated places over East Rajasthan, West Uttar Pradesh, Uttarakhand, Assam. These were **markedly below normal (-5.1°C or less)** at a few places over Jharkhand; at isolated places over Odisha, Gangetic West Bengal; **appreciably below normal (-3.1°C to -5.0°C)** at many places over Rayalaseema; at a few places over South Interior Karnataka; at isolated places over Bihar, Telangana; **below normal (-3.0°C to -1.6°C)** at a few places over East Uttar Pradesh; at isolated places over Chhattisgarh, Sub-Himalayan West Bengal & Sikkim, Nagaland, Tripura, Meghalaya, Tamil Nadu, Puducherry & Karaikal and near normal over rest parts of the country. **(Fig. 2)**
- ❖ Yesterday, the Maximum temperatures have shown **falling tendency** during past 24 hours by **1-3°C** over South Interior Karnataka, Rayalaseema, Bihar; **rising tendency by 2-5°C** over Gujarat Region, Chhattisgarh, Odisha, West Bengal, Assam & Meghalaya, Manipur and **by 1-2°C** over Jammu-Kashmir-Ladakh-Gilgit-Baltistan-Muzaffarabad, Himachal Pradesh, Uttar Pradesh, Rajasthan, Madhya Maharashtra and **no significant change** over the rest parts of the country.
- ❖ Yesterday, Maximum Temperatures were in the range of **36-40°C** at many places over Maharashtra, Rayalaseema, south Coastal Andhra Pradesh & Yanam, Gujarat state, west Rajasthan, West Madhya Pradesh; **30-35°C** at many places over East Madhya Pradesh, Chhattisgarh, Odisha, Uttar Pradesh, Bihar, Punjab, Lakshadweep and Andaman & Nicobar Islands; **25-30°C** over remaining parts of country. Yesterday, the highest maximum temperature of **41.0°C** was reported at **Surendranagar (Saurashtra & Kutch)** over the country. **(Fig.1)**

Fig. 1: Maximum Temperatures

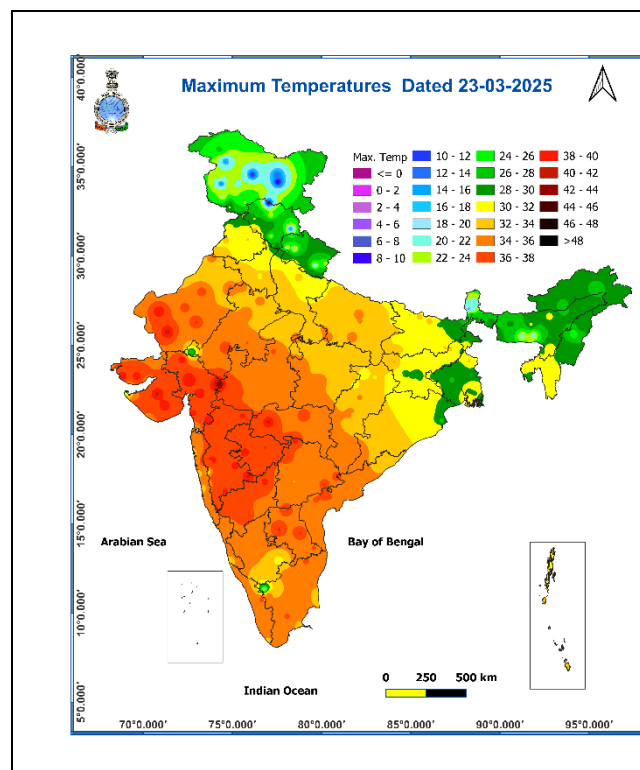
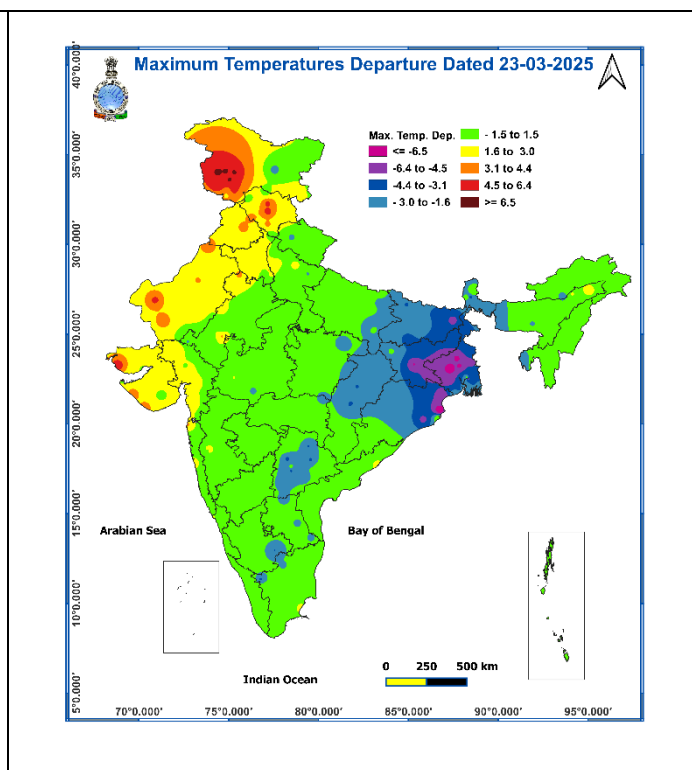
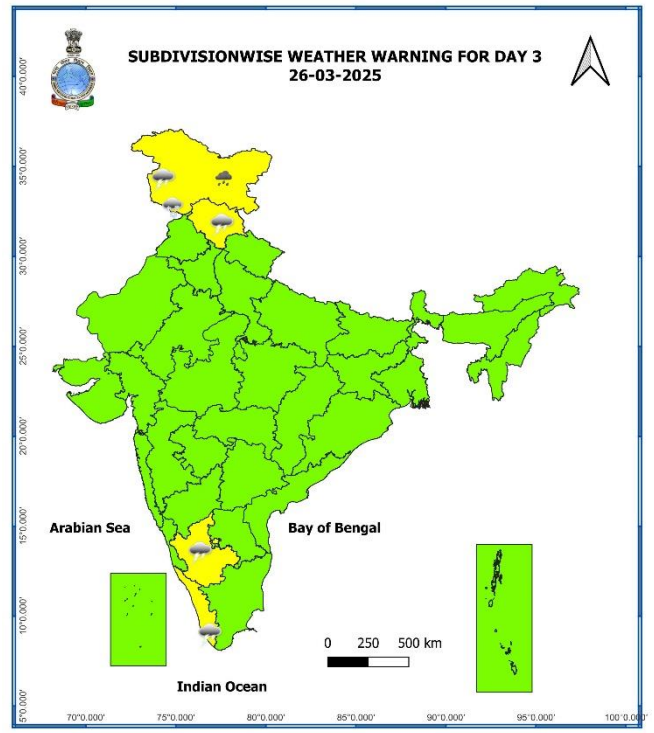
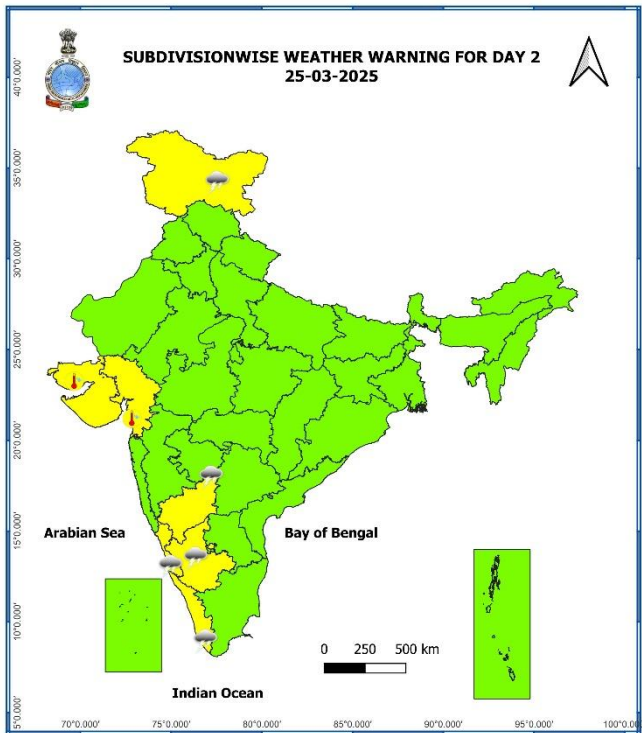
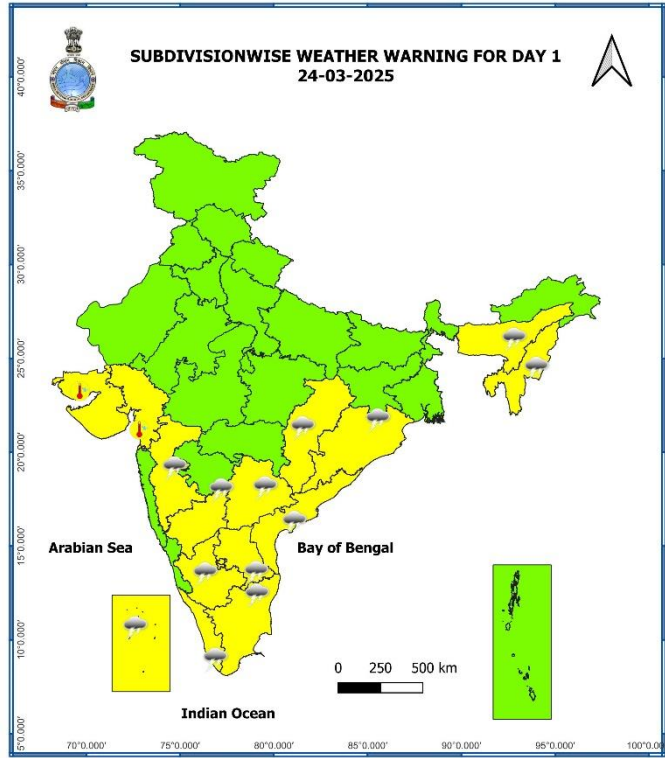


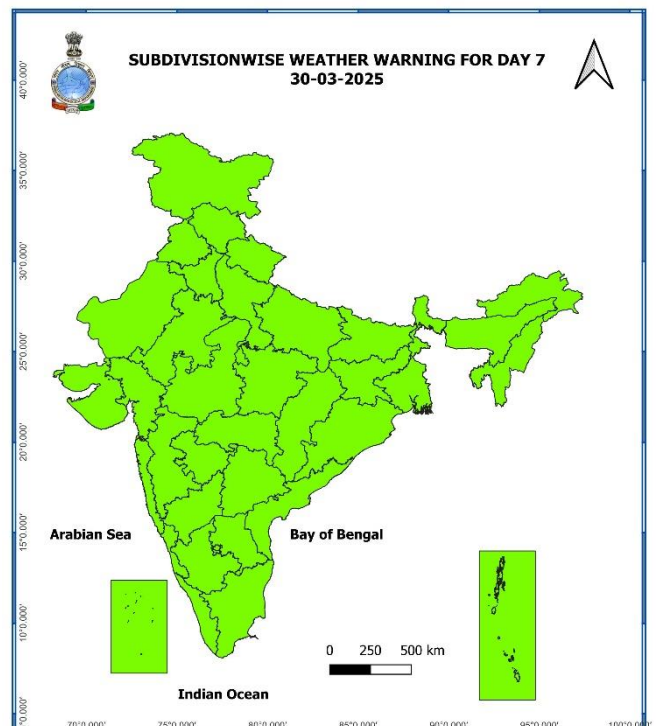
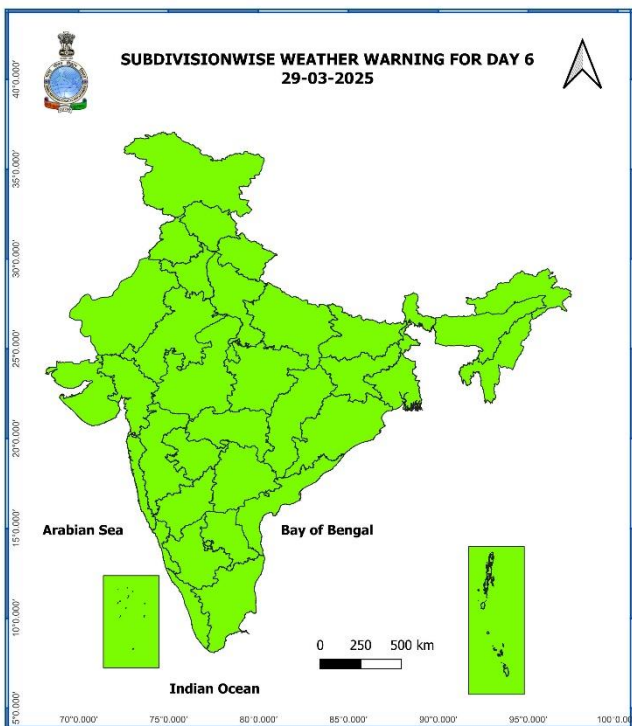
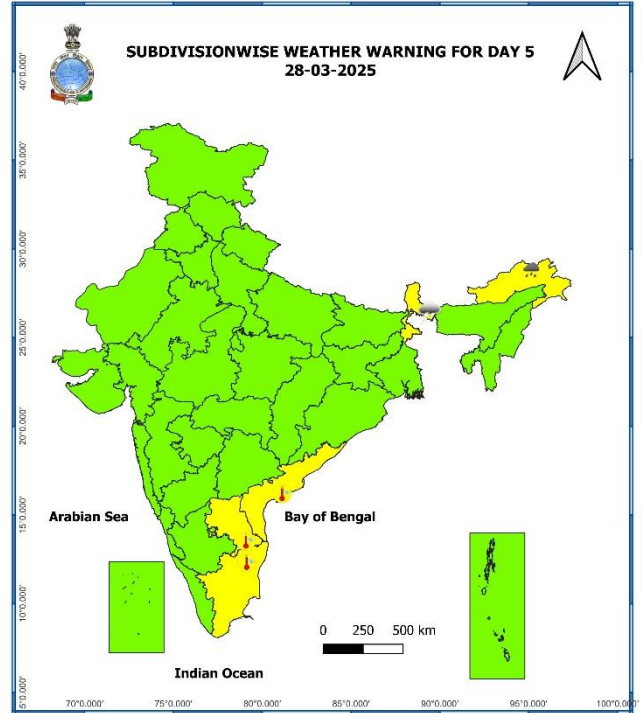
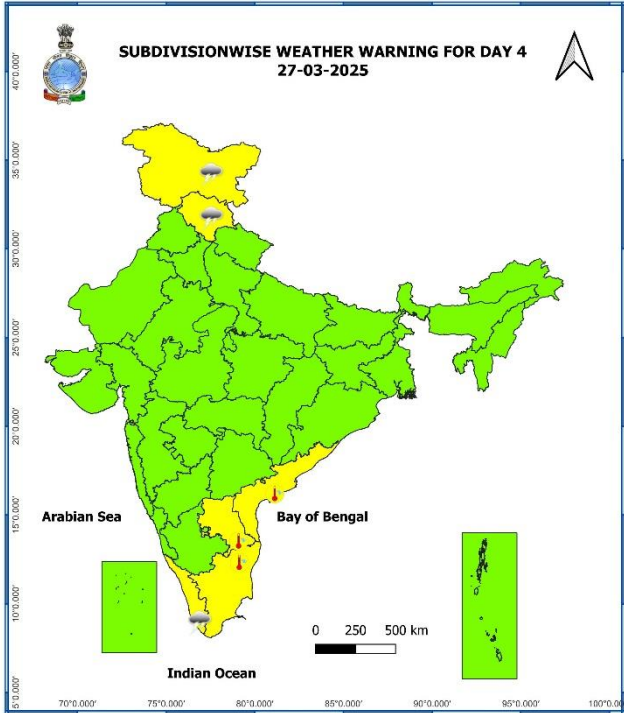
Fig. 2: Departure of Maximum Temperatures



7 Days Rainfall Forecast								
S. No.	Subdivision	24-Mar	25-Mar	26-Mar	27-Mar	28-Mar	29-Mar	30-Mar
		Day 1	Day 2	Day 3	Day 4	Day 5	Day 6	Day 7
1	ANDAMAN & NICOBAR ISLANDS	ISOL	DRY	DRY	DRY	DRY	DRY	ISOL
2	ARUNACHAL PRADESH	ISOL	ISOL	ISOL	ISOL	FWS	FWS	SCT
3	ASSAM & MEGHALAYA	ISOL	DRY	DRY	DRY	ISOL	ISOL	ISOL
4	NAGALAND, MANIPUR, MIZORAM & TRIPURA	ISOL	DRY	DRY	DRY	ISOL	ISOL	ISOL
5	SUB-HIMALAYAN WEST BENGAL & SIKKIM	DRY	DRY	DRY	ISOL	SCT	ISOL	ISOL
6	GANGETIC WEST BENGAL	DRY	DRY	DRY	DRY	DRY	DRY	DRY
7	ODISHA	ISOL	DRY	DRY	DRY	DRY	DRY	DRY
8	JHARKHAND	DRY	DRY	DRY	DRY	DRY	DRY	DRY
9	BIHAR	DRY	DRY	DRY	DRY	DRY	DRY	DRY
10	EAST UTTAR PRADESH	DRY	DRY	DRY	DRY	DRY	DRY	DRY
11	WEST UTTAR PRADESH	DRY	DRY	DRY	DRY	DRY	DRY	DRY
12	UTTARAKHAND	DRY	DRY	ISOL	ISOL	DRY	DRY	DRY
13	HARYANA CHANDIGARH & DELHI	DRY	DRY	DRY	DRY	DRY	DRY	DRY
14	PUNJAB	DRY	DRY	DRY	DRY	DRY	DRY	DRY
15	HIMACHAL PRADESH	DRY	ISOL	ISOL	SCT	DRY	DRY	DRY
16	JAMMU & KASHMIR AND LADAKH	ISOL	ISOL	SCT	SCT	DRY	DRY	DRY
17	WEST RAJASTHAN	DRY	DRY	DRY	DRY	DRY	DRY	DRY
18	EAST RAJASTHAN	DRY	DRY	DRY	DRY	DRY	DRY	DRY
19	WEST MADHYA PRADESH	DRY	DRY	DRY	DRY	DRY	DRY	DRY
20	EAST MADHYA PRADESH	DRY	DRY	DRY	DRY	DRY	DRY	DRY
21	GUJARAT REGION	DRY	DRY	DRY	DRY	DRY	DRY	DRY
22	SAURASHTRA & KUTCH	DRY	DRY	DRY	DRY	DRY	DRY	DRY
23	KONKAN & GOA	DRY	DRY	DRY	DRY	DRY	DRY	DRY
24	MADHYA MAHARASHTRA	ISOL	DRY	DRY	DRY	DRY	DRY	DRY
25	MARATHAWADA	ISOL	DRY	DRY	DRY	DRY	DRY	DRY
26	VIDARBHA	ISOL	DRY	DRY	DRY	DRY	DRY	DRY
27	CHHATTISGARH	ISOL	DRY	DRY	DRY	DRY	DRY	DRY
28	COASTAL ANDHRA PRADESH & YANAM	ISOL	DRY	DRY	DRY	DRY	DRY	DRY
29	TELANGANA	ISOL	DRY	DRY	DRY	DRY	DRY	DRY
30	RAYALASEEMA	ISOL	DRY	DRY	DRY	DRY	DRY	DRY
31	TAMILNADU PUDUCHERRY & KARAIKAL	ISOL	ISOL	ISOL	DRY	DRY	DRY	DRY
32	COASTAL KARNATAKA	ISOL	SCT	DRY	DRY	DRY	DRY	ISOL
33	NORTH INTERIOR KARNATAKA	ISOL	ISOL	DRY	DRY	DRY	DRY	DRY
34	SOUTH INTERIOR KARNATAKA	ISOL	ISOL	ISOL	DRY	DRY	ISOL	ISOL
35	KERALA & MAHE	SCT	SCT	ISOL	ISOL	ISOL	ISOL	ISOL
36	LAKSHADWEEP	SCT	ISOL	ISOL	ISOL	ISOL	ISOL	ISOL

- As the lead period increases forecast accuracy decreases.





- Action may be taken based on **ORANGE AND RED COLOUR** warnings.
- Vulnerable regions likely urban and hilly areas action may be initiated for heavy rainfall warning.
- As the lead period increases forecast accuracy decreases.

Detailed district wise Multi Hazard weather warning for next five days available at <https://mausam.imd.gov.in/responsive/districtWiseWarningGIS.php>

Weather forecast over Delhi/NCR during 24th Mar. to 27th Mar. 2025**Past Weather:**

There has been a slight rise in minimum temperature and rise in maximum temperature upto 02°C over Delhi/NCR during the past 24 hours. The maximum and minimum temperatures over Delhi are in the range of 33 to 35°C and 15 to 17°C respectively. The minimum temperature was below normal upto 03°C and maximum temperature above normal upto 03°C at most places. Mainly clear sky conditions with predominant surface wind from the southwest direction with wind speeds less than 10 to 12 kmph prevailed during the past 24 hours. Mainly clear sky conditions with wind speed less than 10 kmph from the south direction prevailed over the region in the forenoon today.

Weather Forecast:

24.03.2025: Mainly clear sky. The maximum temperature over Delhi is likely to be in the range of 35 to 37°C. The predominant surface wind will likely be from the north direction with a wind speed of less than 10 kmph till evening. It would decrease thereafter becoming less than 06 kmph from the northeast direction during the night.

25.03.2025: Mainly clear sky. The maximum and minimum temperatures over Delhi are likely to be in the range of 36 to 38°C and 16 to 18°C respectively. The predominant surface wind will likely be from the southwest direction with a wind speed of 06-08 kmph during morning hours. The wind speed will gradually increase thereafter becoming 08-10 kmph from the northwest direction during the afternoon. It will decrease becoming less than 06 kmph from the northeast direction during evening and night.

26.03.2025: Mainly clear sky. The maximum and minimum temperatures over Delhi are likely to be in the range of 37 to 39°C and 18 to 20°C respectively. The predominant surface wind will likely be from the west direction with a wind speed of 04-06 kmph during morning hours. The wind speed will gradually increase becoming 12-14 kmph from the northwest direction in the afternoon. It will decrease becoming less than 08 kmph from the northwest direction during evening and night.

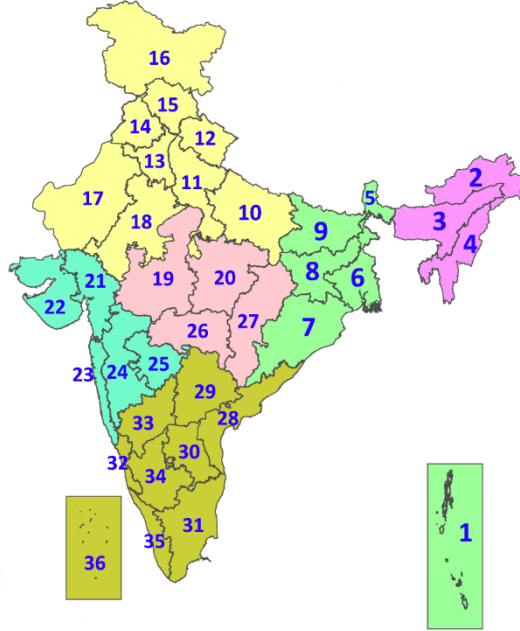
27.03.2025: Mainly clear sky. Strong surface winds (speed 20 – 30 kmph). The maximum and minimum temperatures over Delhi are likely to be in the range of 36 to 38°C and 19 to 21°C respectively. The predominant surface wind will likely be from the northwest direction with a wind speed of 12-14 kmph during morning hours. The wind speed will gradually increase becoming 16-20 kmph from the northwest direction in the afternoon. It will decrease becoming less than 12 kmph from the northwest direction during evening and night.

Legends & abbreviations:

- ❖ **Heavy Rain:**64.5-115.5mm; **Very Heavy Rain:**115.6-204.4mm; **Extremely Heavy Rain:** >204.4mm.
- ❖ **Obsy:** Observatory; **AWS:** Automatic Weather Station; **ARG:** Automatic Rain Gauge; **dist:** District; **NH:** National Highway; **KVK:** Krishi Vigyan Kendra; **DVC:** Damodar Valley Corporation; **PTO:** Part Time Office, **Aero:** Aerodrome, **IAF:** Indian Air Force.
- ❖ **Region wise classification of meteorological Sub-Divisions:**
 - **Northwest India:** Western Himalayan Region (Jammu-Kashmir-Ladakh-Gilgit-Baltistan-Muzaffarabad, Himachal Pradesh and Uttarakhand); Punjab, Haryana-Chandigarh-Delhi; West Uttar Pradesh, East Uttar Pradesh, West Rajasthan and East Rajasthan.
 - **Central India:** West Madhya Pradesh, East Madhya Pradesh, Vidarbha and Chhattisgarh.
 - **East India:** Bihar, Jharkhand, Sub-Himalayan West Bengal & Sikkim; Gangetic West Bengal, Odisha and Andaman & Nicobar Islands.
 - **Northeast India:** Arunachal Pradesh, Assam & Meghalaya and Nagaland, Manipur, Mizoram & Tripura.
 - **West India:** Gujarat Region, Saurashtra & Kutch, Konkan & Goa, Madhya Maharashtra and Marathawada.
 - **South India:** Coastal Andhra Pradesh & Yanam, Telangana, Rayalaseema, Coastal Karnataka, North Interior Karnataka, South Interior Karnataka, Kerala & Mahe, Tamil Nadu, Puducherry & Karaikal and Lakshadweep.

LEGENDS

1. अंडमान और निकोबार द्वीपसमूह
2. अरुणाचल प्रदेश
3. असम और मेघालय
4. नागालैंड, मणिपुर, मिजोरम और त्रिपुरा
5. उप-हिमालयी पश्चिम बंगाल और सिक्किम
6. गंगीय पश्चिम बंगाल
7. ओडिशा
8. झारखंड
9. बिहार
10. पूर्वी उत्तर प्रदेश
11. पश्चिम उत्तर प्रदेश
12. उत्तराखंड
13. हरियाणा, चंडीगढ़ और दिल्ली
14. पंजाब
15. हिमाचल प्रदेश
16. जम्मू और कश्मीर और लद्दाख
17. पश्चिम राजस्थान
18. पूर्वी राजस्थान
19. पश्चिम मध्य प्रदेश
20. पूर्वी मध्य प्रदेश
21. गुजरात
22. सौराष्ट्र
23. कोंकण और गोवा
24. मध्य महाराष्ट्र
25. मराठवाड़ा
26. विदर्भ
27. छत्तीसगढ़
28. तटीय आंध्र प्रदेश और यनम
29. तेलंगाना
30. रायलसीमा
31. तमिलनाडु, पुडुचेरी और कराईकल
32. तटीय कर्नाटक
33. आंतरिक उत्तरी कर्नाटक
34. आंतरिक दक्षिणी कर्नाटक
35. केरल और माहे
36. लक्षद्वीप



1. Andaman & Nicobar Islands
2. Arunachal Pradesh
3. Assam & Meghalaya
4. Nagaland, Manipur, Mizoram & Tripura
5. Sub-Himalayan West Bengal & Sikkim
6. Gangetic West Bengal
7. Odisha
8. Jharkhand
9. Bihar
10. East Uttar Pradesh
11. West Uttar Pradesh
12. Uttarakhand
13. Haryana, Chandigarh & Delhi
14. Punjab
15. Himachal Pradesh
16. Jammu & Kashmir and Ladakh
17. West Rajasthan
18. East Rajasthan
19. West Madhya Pradesh
20. East Madhya Pradesh
21. Gujarat
22. Saurashtra
23. Konkan & Goa
24. Madhya Maharashtra
25. Marathwada
26. Vidarbha
27. Chhattisgarh
28. Coastal Andhra Pradesh & Yanam
29. Telangana
30. Rayalaseema
31. Tamilnadu, Puducherry & Karaikal
32. Coastal Karnataka
33. North Interior Karnataka
34. South Interior Karnataka
35. Kerala & Mahe
36. Lakshadweep

SPATIAL DISTRIBUTION (% of Stations reporting)

% Stations	Category	% Stations	Category
76-100	Widespread (WS/Most Places)	26-50	Scattered (SCT/A Few Places)
51-75	Fairly Widespread (FWS/Many Places)	1-25	Isolated (ISOL)

- | | | |
|----------------------|----------------------|--------------|
| Fog | Heavy Snow | Cold Wave |
| Heavy Rain | Dust Storm | Cold Day |
| Very Heavy Rain | Heat Wave | Ground Frost |
| Extremely Heavy Rain | Warm Night | |
| Thunder & Lightning | Hot Day | |
| Hailstorm | Hot & Humid | |
| Dust Raising Winds | Strong Surface Winds | |

COLOUR CODED WARNING

No Warning (No Action)
Watch (Be Aware)
Alert (Be Prepared To Take Action)
Warning (Take Action)

Probabilistic Forecast

Terms	Probability of Occurrence (%)
Unlikely	< 25
Likely	25 - 50
Very Likely	50 - 75
Most Likely	> 75

* Red colour warning does not mean "Red Alert", Red colour warning means "Take Action".
Forecast and Warning for any day is valid from 0830 hours IST of day till 0830 hours IST of next day.
For more details, kindly visit <https://mausam.imd.gov.in> or contact: 011-2434-4599
(Service to the Nation since 1875)

DEFINITION/CRITERIA

Rain/ Snow *	Heavy: 64.5 to 115.5 mm/cm * Very Heavy: 115.6 to 204.4 mm/cm * Extremely Heavy: > 204.4 mm/cm *
Heat Wave	When maximum temperature of a station reaches $\geq 40^\circ\text{C}$ for plains and $\geq 30^\circ\text{C}$ for hilly regions (a) Based on Departure from normal Heat Wave: Maximum Temperature Departure from normal 4.5°C to 6.4°C . Severe Heat Wave: Maximum Temperature Departure from normal $\geq 6.5^\circ\text{C}$ (b). Based on Actual maximum temperature Heat Wave: When actual maximum temperature $\geq 45^\circ\text{C}$. Severe Heat Wave: When actual maximum temperature $\geq 47^\circ\text{C}$ (c). Criteria for heat wave for coastal stations When maximum temperature departure is $> 4.5^\circ\text{C}$ from normal. Heat Wave may be described provided maximum temperature $\geq 37^\circ\text{C}$
Warm Night	When maximum temperature remains 40°C Warm Night: When minimum temperature departure 4.5°C to 6.4°C . Severe Warm Night: When minimum temperature departure $> 6.4^\circ\text{C}$.
Cold Wave	When minimum temperature of a station $\leq 10^\circ\text{C}$ for plains and $\leq 0^\circ\text{C}$ for hilly regions. (a). Based on departure Cold Wave: Minimum Temperature Departure from normal -4.5°C to -6.4°C . Severe Cold Wave: Minimum Temperature Departure from normal $\leq -6.5^\circ\text{C}$ (b) Based on actual Minimum Temperature (for Plains only) Cold Wave : When Minimum Temperature is $\leq 4.0^\circ\text{C}$ Severe Cold Wave: When Minimum Temperature is $\leq 2.0^\circ\text{C}$ (c) For Coastal Stations When Minimum Temperature departure is $\leq -4.5^\circ\text{C}$ & actual Minimum Temperature is $\leq 15^\circ\text{C}$
Cold Day	When minimum temperature of a station $\leq 10^\circ\text{C}$ for plains and $\leq 0^\circ\text{C}$ for hilly regions Based on departure Cold Day: Maximum Temperature Departure from normal -4.5°C to -6.4°C . Severe Cold Day: Maximum Temperature Departure from normal $\leq -6.5^\circ\text{C}$
Fog	Phenomenon of small droplets suspended in air and the horizontal visibility $< 1\text{km}$ Moderate Fog: When the visibility between 500-200 metres Dense Fog: when the visibility between 50- 200 metres Very Dense Fog: when the visibility < 50 metres
Thunderstorm	Sudden electrical discharges manifested by a flash of light (Lightning) and a sharp rumbling sound (thunder)
Dust/Sand Storm	An ensemble of particles of dust or sand energetically lifted to great heights by a strong and turbulent wind.
Frost	Ice deposits on ground Air temperature $\leq 4^\circ\text{C}$ (over Plains)
Squall	A strong wind that rises suddenly, lasts for atleast 1 minute. Moderate: Wind speed 52-61 kmph Severe: Wind speed 62-87 kmph Very Severe: Wind speed > 87 kmph
Sea State	Effect of various waves in the sea over specific area Rough to very rough: Wind speed 41-62 kmph (22-33 knots) & Wave height 2.5-6 metre High to very high: Wind speed 63-117 kmph (34-63 knots) & Wave height 6-14 metre Phenomenal: Wind speed > 117 kmph (> 63 knots) & Wave height > 14 metre
Cyclone	Cyclonic Storm: Wind speed 62-87 kmph (34-47 knots) Severe Cyclonic Storm: Wind speed 88-117 kmph (48-63 knots) Very Severe Cyclonic Storm: Wind speed 118-165 kmph (64 - 89 knots) Extremely Severe Cyclonic Storm: Wind speed 166-220 kmph (90 -119 knots) Super Cyclone Strom: Wind speed > 220 kmph (> 119 knots)

* Red colour warning does not mean "Red Alert", Red colour warning means "Take Action".
 Forecast and Warning for any day is valid from 0830 hours IST of day till 0830 hours IST of next day.
 For more details, kindly visit <https://mausam.imd.gov.in> or contact: 011-2434-4599
 (Service to the Nation since 1875)

Hot and Humid: When maximum temperatures remain 3°C above normal along with the above normal relative humidity.